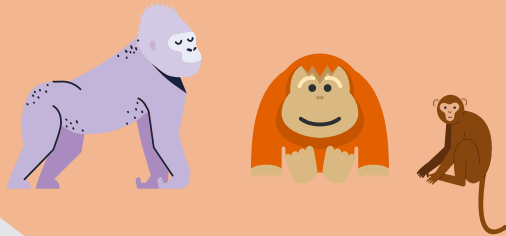





THE GORILLA VS THE HUMAN




THE GORILLA

- Knuckle walk 
- Herbivores 
- Arm muscles are much larger than leg muscles 
- The largest primate



THE HUMAN

- No tails
- Can see in color
- Have same number of teeth (32) 
- Opposable thumbs 
- Similar genetic sequence 
- Have finger and toenails
- Similar gestation period
- Benefit from play
- Catch same diseases

- Walk bipedally 
- Omnivores  
- Generally, leg muscles are larger than arm muscles
- Longer life spans 